

ARABA'S COURT

 EAST LEGON HILLS



ABOUT US

SQUARE MILE HOMES

is one of the leading real estate developers in Ghana, established in 2015 and has maintained a solid record of completed development of residential projects through a combination of financial, engineering and architectural expertise.

As a company, we believe that our most important goal is the creation of valued homes as part of an overall community. At Square Mile Homes, quality takes precedence, from choosing the right location and style of home, to the construction processes we practice, the materials we use and the specifications we put into our homes.

We strongly believe that what we deliver is a valued living space immersed harmoniously into the community and will eventually be a legacy of the city. Square Mile Homes has a strong focus on professional quality that has enabled us to develop strong relationships with our investors and clients. Our professionals possess a high level of experience and passion to provide the most suitable solutions to ensure the success of each unique and challenging project.



ARABA'S COURT

EAST LEGON HILLS

This beautiful home redefines townhouses with a synergy that flows between all levels and fills it with a unique aura of warmth, wellbeing, and hospitality.

Love entertaining? The ARABA'S Court townhouse was designed to make it easy for you. Light, open space, clever design, and careful proportions come together seamlessly to create a special connection between the expansive living areas on each floor.

There's plenty of space for letting your imagination run free and make your home feel like a tropical resort everyone wants to holiday in! There is ample space for you to have a private pool if you wish. Each townhouse has five generous bedrooms, including a Master Suite.

The inclusion of a home theatre on the second floor provides extra space to unwind at the end of the day, while the expansive kitchen is an inviting place for everyone to gather, laugh and forge memories you'll treasure forever.

ARABA'S Court will constantly surprise you with the clever little details that enhance the way you live here. The open-plan home office on the first floor makes it easy to duck away when work calls, while upstairs on the rooftop terrace is a place for retreat.

The kids will love it too, with a cleverly positioned study nook providing the perfect place for homework and the Children's activity room off the upstairs landing giving them their own space to kick back and relax.

Flawlessly appointed, ARABA'S Court offers a luxurious lifestyle that's perfect for the discerning homeowner.

The Perfect Balance

between style, comfort and functional design



Inspired by Scandinavian Designs

Araba's Court incorporates clean lines, modern textures and natural light to create distinct living spaces that complement the art of living well. This designer residential development is located in a secure, boomed-off neighborhood and comprises 6 private townhomes with security fenced walls.

Your lifestyle of distinction starts at

\$270,000

₱3,353,400

East Legon Hills

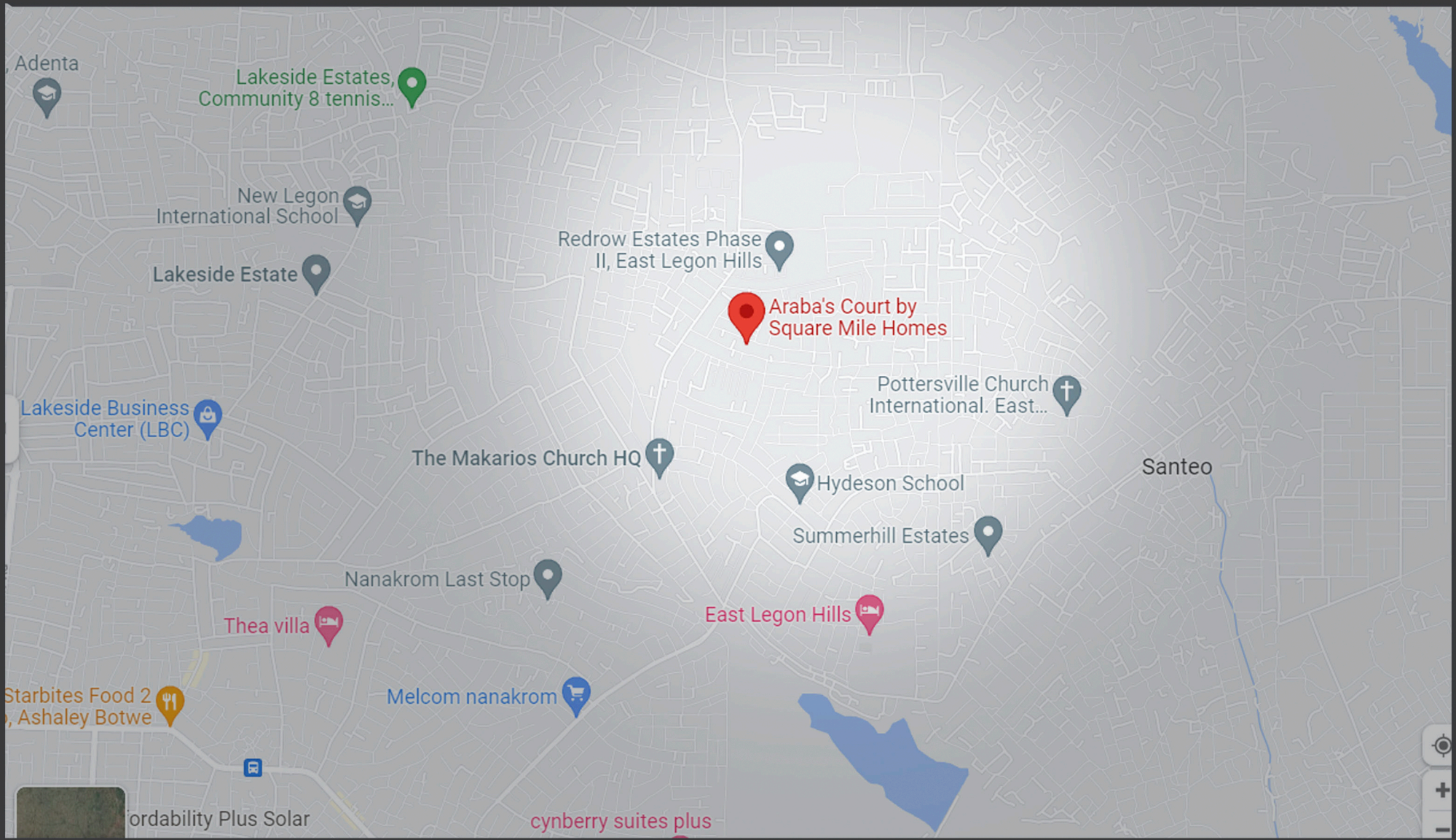
The quality of life is more important than life itself.

Location: One of the most pleasing and sought-after residential areas in the capital is East Legon Hills. The area is newly developed with good access roads and network and therefore has become attractive. The neighborhood is sparsely populated and occupied by dwellers in mid to upper-income levels.

Neighboring social amenities: Major hospitals within the vicinity include Sweden Ghana Medical Centre. International schools that neighbor our development include the British International School. Neighboring projects include the Adams Grey Townhouses, Red Row Estates, and the Richfield Lifestyle Estate. The Silicon Accra Project, a 10-acre technology park currently under development is within 2km of the ARABA'S Court Townhouses.



Location Map





Redefining Living at East Legon Hills

The innovative design ensures your own private escape every time you walk through the front door. The perfect combination of a family-friendly layout with delightful retreat spaces and living, kitchen and dining areas is spread across the core of the home



Where you want to be

- Master Bedroom

Ultra-modern spaces are reminiscent of an affluent home.



Walk-in-Closet

Bathroom & ensuite.



Relax and unwind in your elegant bathroom and ensuite with high-quality sanitary ware & bathroom furniture

Bathtub

2 Options

- A luxurious free-standing bath in lieu of the standard fitted bath to your bathroom



Toilet

- Close couple rimless toilet suite with soft close seat



Plugs

- Chrome plugs and waste to bath and pop-up waste to basins



Vanity set & sinks

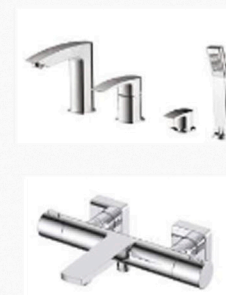
2 Options

- Studio Collection reinvents compact vanity and storage solutions.
- Instantly add flair and luxury to small spaces with a modern twist on practicality and functionality.



Taps

- Drift chrome tapware with wall mounted bath spout



Premium appliances.



BOSCH
Invented for life



These world-renowned premium appliances will create a kitchen that feels like your own personal 5 star restaurant

Fridge

French Double door fridge

- This stainless steel French double door fridge freezer offers large flexible space for a busy family
- Keep drinks cool with a French double door fridge featuring an ActiveSmart system with adjustable glass shelves and full extension freezer drawer



Dishwasher

600mm dishwasher

- Dishes will be left sparkling with this 14 piece digital display dishwasher with 6 wash programs



Rangehood

900mm externally ducted rangehood

- The ducted rangehood will easily remove steam and smoke from your cooking straight to the outside of your home



Cookers

600mm gas cooktop with 600mm under bench oven

- Bake in style with a stainless steel black reflective glass oven with 9 functions intuitive control system
- Enjoy maximum flexibility with the Bosch vario hob



Microwave

With user friendly electronics

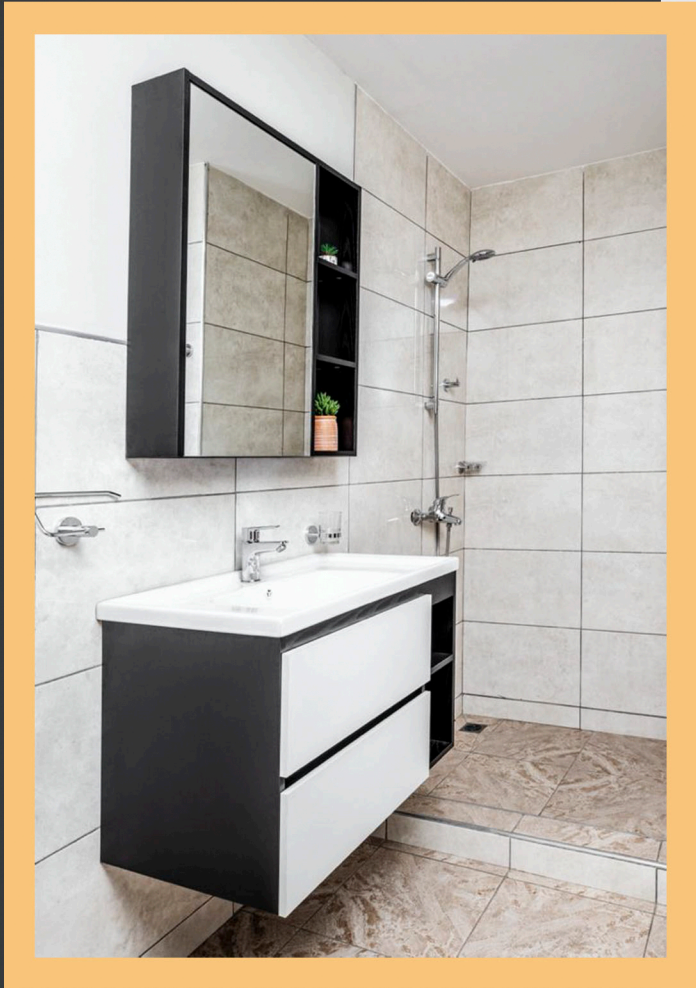
- AutoPilot - 8 automatic programmes 4 defrost programs
- 3 cooking programs in microwave function combi program Memory-Function



Airconditioners

Wall mount premium Air Conditioners fitted in all rooms





Made for Friends & Family

At the rear of the home is the bright and breezy gourmet kitchen and outdoor kitchen. The expansive family and living areas provide the perfect place for everyone to gather, laugh and forge memories you will treasure forever.



Imaginative Solutions

The open-plan home office on the first floor makes it easy to duck away when work calls





Holiday At Home

Light, open space, clever design and careful proportions come together at ARABA'S Court to create a special flow between the expansive living spaces



Expansive Outdoor Space

Natural warm and cool tones, bring a sense of the surrounding landscape into living spaces.

Private Swimming Pool,
Personalised Compound Landscape,
Alfresco are optional





Guest Bedroom

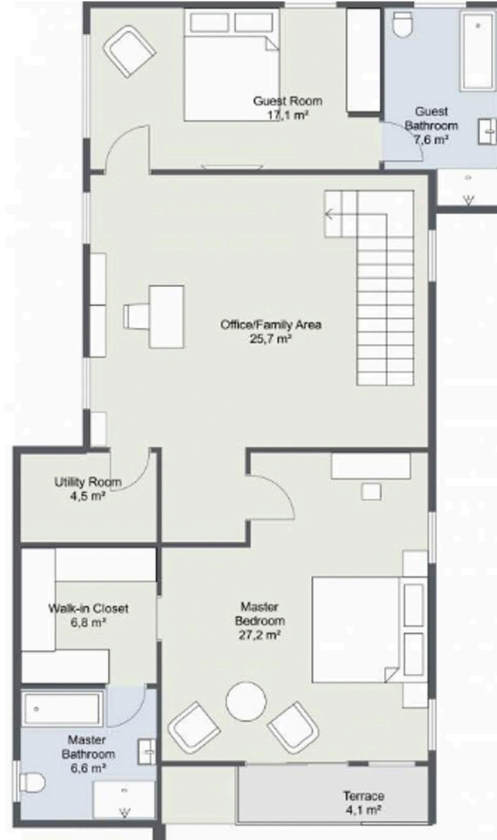
**Bright Light-filled spaces.
Great. Practical liveability.
Stylish contemporary appeal**



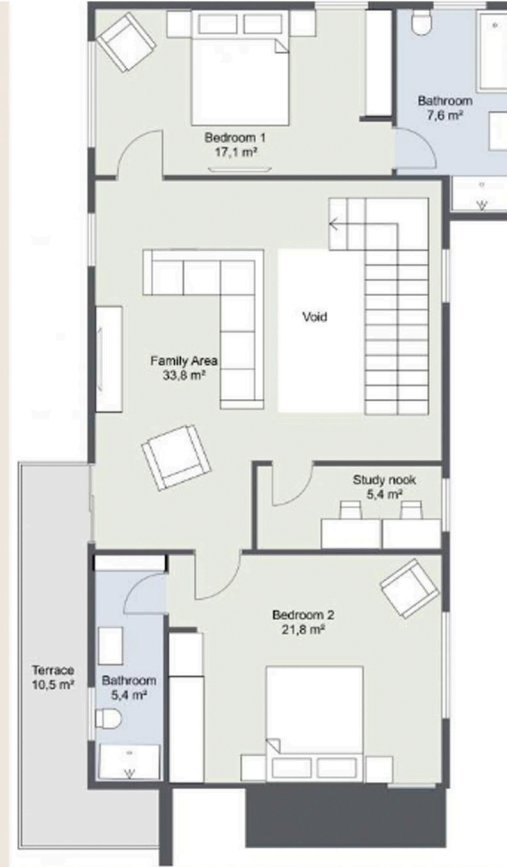
Floor plans - 354 SQM



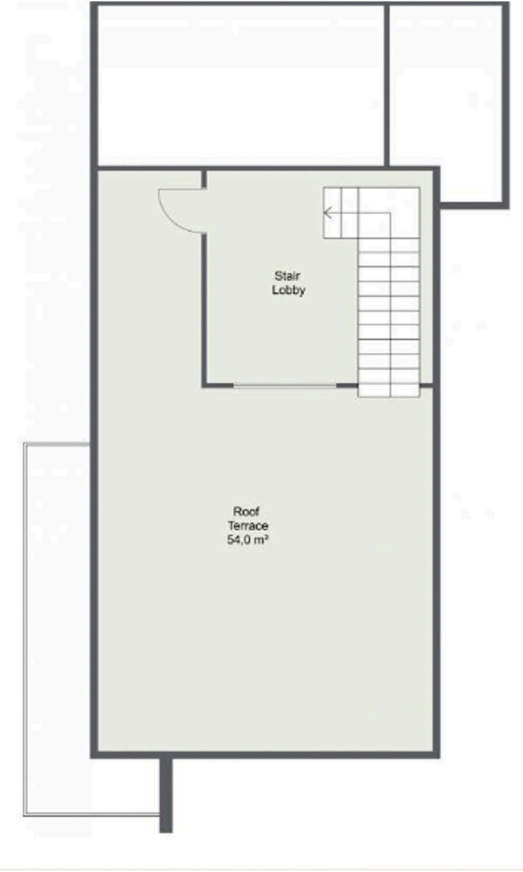
Ground Floor



First Floor



Second Floor



Roof Terrace

ARABA'S Court Townhouses have been thoughtfully designed to provide space to unwind and relax. Set across three floors with an impressive roof terrace, modern elegance runs throughout this boutique collection of homes.

Availability & Prices



Starting Prices:

\$270,000

3,353,400

Payment Plan

Option 1: Standard

60% down payment
40% balance spread over
9 Months

Option 2: Supersaver

Substantial discount of up
to 10% on outright
payment

Option 3: Flexi

25% down payment
25% deposit by 3 Month
25% deposit by 6 Month
25% deposit by 9 Month

Option 4: Mortgage

30% down payment
70% balance by Mortgage

Start your purchase by placing a \$5,000 reservation fee and signing the reservation form to secure your chosen property. We will then send you a sale and purchase agreement for review, which must be signed and return to us within 30 days along with your first installment.

WHY CHOOSE US?

Modernized Architectural Design: Our properties boast a stunning modern design that blends contemporary aesthetics with functional living spaces. Every detail has been meticulously crafted to offer a visually appealing and stylish environment. It showcases exceptional craftsmanship and attention to detail throughout, ensuring a high standard of construction and finishing.

Urban Convenience: Our properties are strategically located in a prime urban area, providing unparalleled convenience. Enjoy easy access to amenities such as shopping centers, restaurants, entertainment venues, and transportation hubs, ensuring a vibrant and dynamic lifestyle.

Serene and Peaceful Environment: Despite its urban location, our properties offer a serene and peaceful environment. Immerse yourself in a tranquil oasis away from the hustle and bustle, where you can unwind and relax in a peaceful setting after a long day.

Secure and Gated Community: The properties offer a secure and gated community, providing peace of mind and ensuring the safety of residents. Security features include 24/7 surveillance, remote and smart locks, intruder alarms, and professional security staff.

Energy Efficiency: Our property is designed with energy efficiency in mind, incorporating features such as energy-saving appliances, insulation, and sustainable materials, providing long-term cost savings and environmental benefits.

Ample Amenities: Enjoy a range of on-site amenities exclusively available to residents, such as a fitness center, swimming pool, landscaped gardens, children's play area, community clubhouse, enhancing the overall living experience.

Strong Rental Potential: If considering the property as an investment, highlight its potential as a lucrative rental property due to its desirable location, amenities, and modern design, attracting tenants and generating consistent rental income.

Value for Money as an Investment: Our properties are not only an ideal place to call home but also represent a smart investment opportunity. With desirable location and modern design, it offers great potential for value appreciation over time, making it an attractive choice for astute investors.

Responsive Customer Service: Assure potential buyers or residents of your commitment to providing excellent customer service, including a responsive management team, reliable maintenance, and prompt assistance for any inquiries or issues.

Choose our property to experience the perfect blend of modern design, urban convenience, a serene ambiance, and excellent investment value. It's an opportunity to embrace a sophisticated lifestyle while enjoying the benefits of a prime location.